

FASET Bulletin No. 6 (1st May 2012)

Repairs to a Knotless Safety Net

Damaged Knotless Safety Nets can be repaired to enable further use. The following FASET guidance should be followed:-

Permanent Patch Repair Minimum Standard:

1. Multi-mesh cuts to a 'Knotless' Safety net shall only be repaired by using a Patch Repair.
2. The repair shall have a Minimum 1 mesh overlap.
3. The patch used in a repair shall be new material and shall comply with BS EN 1263-1.
4. The repair twine shall be a minimum of 3mm thick, shall be new material approved by the Safety Net Manufacturer for safety net repair and shall be double knotted either side of each strand.
5. There are two method of how a Patch can be attached to a Safety Net, by:
 - lacing repair twine to both the inside and perimeter meshes of the patch (figure 1)
 - using cable ties to attach the inside (only) mesh of the patch and then lacing the perimeter meshes (figure 2)

THE CABLE TIE IS NOT TO BE CONSIDERED AS CONTRIBUTING ANY STRENGTH TO THE REPAIR.

6. Repairs must not overlap.
7. **Permanent Single Strand Repair:** The repair twine shall be a minimum of 3mm thick, shall be new material approved by the Safety Net Manufacturer for safety net repair and shall be double knotted either side of each strand.

The repair must extend at least 1 square past the damage and the repair twine must cross the damaged hole twice.

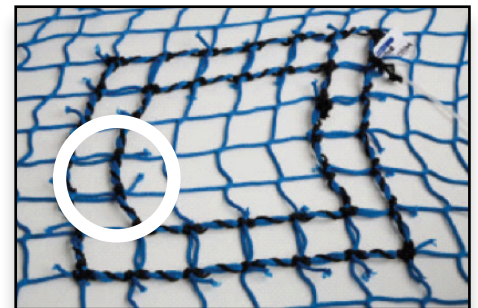


Figure 1

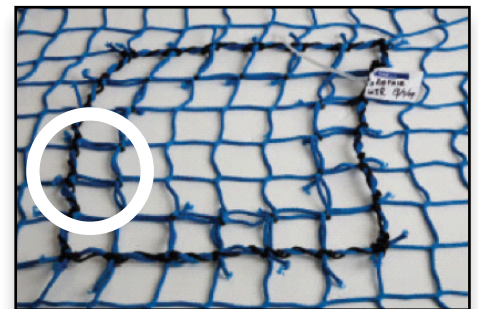


Figure 2



'Torn strand'

For more information about FASET, contact:

FASET
PO BOX 138, WHITCHURCH
SHROPSHIRE. SY13 9AD

T +44 (0)1948 780652
E enquiries@faset.org.uk
W www.faset.org.uk

FASET
Fall Arrest Safety Equipment Training

UKCG
UK Contractor Group